



**GIBSON STAINLESS®**  
& SPECIALTY INC

[www.gibsonstainless.com](http://www.gibsonstainless.com)

# PRODUCT BULLETIN

**NEW!**

## Split Ring Clamps

Split ring clamps are designed to provide space between a raceway and the wall, floor, ceiling or other structure on which it is run. This "stand-off" is often found in wash-down areas where water and chemicals are used and where it is necessary to ensure nothing is trapped between the conduit system and the mounting surface. Gibson split ring clamps can be used for vertical or horizontal conduit runs.

Gibson Stainless sells the split ring clamp components separately:

- The split rings are currently offered for conduit sizes ½" – 2".
- The extension rods are offered in a ¾" diameter and in 2", 4", or 6" lengths.
- The mounting plates are available for a ¾" rod size.

**100% Made in USA**

**In Stock Now and Available for Immediate Shipment.**

**FOR MORE INFORMATION  
CALL 1.800.945.4316  
OR YOUR LOCAL REP**



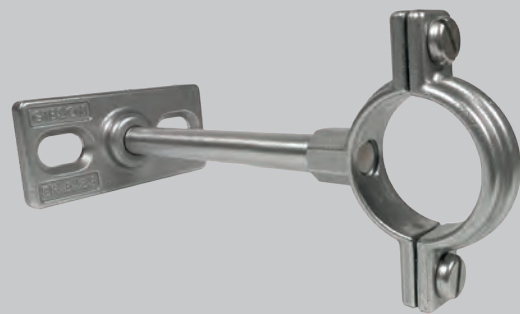
*Split Ring Clamp*



*Split Ring Extension Rod*



*Split Ring Mounting Plate*



*Assembled View  
(components sold separately)*



**GIBSON STAINLESS®**  
& SPECIALTY INC

PO Box 847, Greensburg, PA 15601 • PHONE: 1-800-945-4316 • FAX: 724-838-1544  
EMAIL: [sales@gibsonstainless.com](mailto:sales@gibsonstainless.com) • WEB: [www.gibsonstainless.com](http://www.gibsonstainless.com)